

CERTIFICATE OF LOCATION OF GOVERNMENT CORNER

NORTH QUARTER Corner of Section 36, Township 105, Range 43, 5TH P.M.

STATE OF MINNESOTA, County of MURRAY

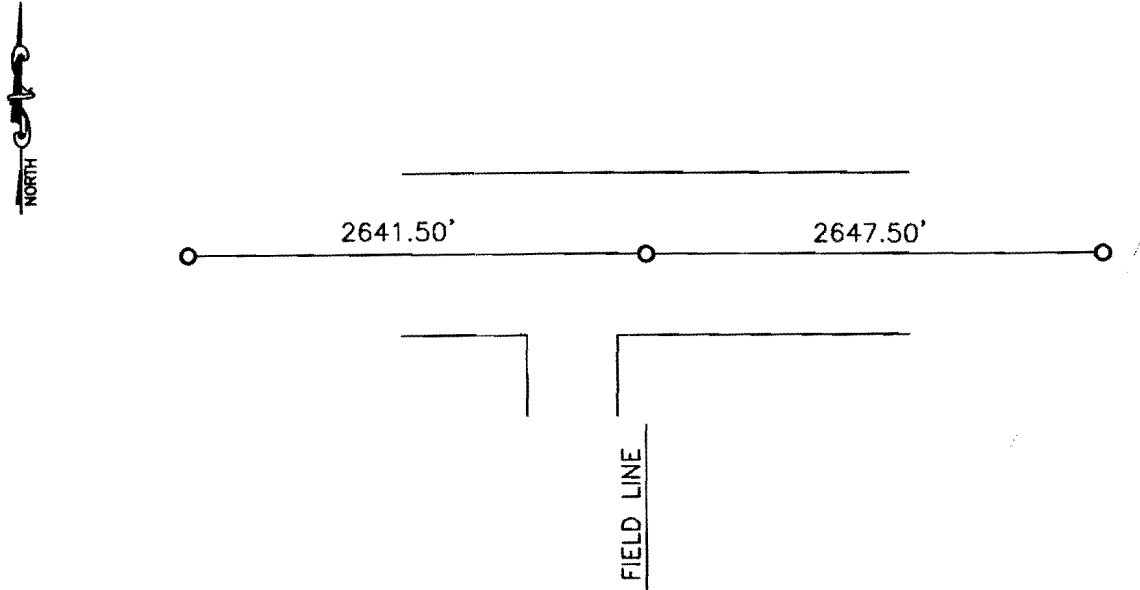
At the corner location shown on the sketch:

On _____ found a _____
DATE

left monument as found, lowered monument, removed monument (explain)

On 05-07-2007 placed a 1" IRON PIPE WITH SEAL #43844
DATE

SKETCH OF REFERENCE TIES



Minnesota State Plane Coordinate
System Murray County Datum
NAD83 (1996)

N: 105564.131
E: 450544.779

Statement of evidence relative to this corner location is on back of page.

I hereby certify that this document and the data contained herein was prepared by me or under my direct supervision.

[Signature] 8/11/08
SIGNATURE DATE

Registration No. 43844

Land Surveyor, Professional Engineer
 County Surveyor, County Engineer

OFFICE OF THE COUNTY RECORDER

County of _____

I hereby certify that this document was filed in the Co. Recorders office at _____ .M on the _____ day of _____ A.D. 20 _____

County Recorder James V. Johnson
By OCT 22 2008, Deputy

DOCUMENT NO. _____

Statement of Evidence

In September 1866, J. W. Bishop did the original subdivision of the township.

On May 7, 2007, Bueltel-Moseng Land Surveying set a 1" iron pipe with seal #43844 in the center of the road and in line with the field line to the south. Local residents said that there used to be a fence line to the south where the field line is now.